



PIONEER
CX-PAL5



enthusiasm for music

The best audio systems do more than merely play music; they reproduce an emotional experience. By resolving the finest details of the recording, we can also recreate the evocative and emotive atmosphere that the performer wants the listener to experience.

At Cyrus we strive to push the boundaries of audio development so that we may better resolve the subtleties held within the recording. Our work involves a fusion of musical enthusiasm, immense patience and technical know-how as we fine tune every part of each component until we're happy it can reproduce the rhythmic, passionate and emotional elements of the original performance. Do we succeed in our goal? Our many awards would suggest we do, but you, the listener, are the ultimate judge.

Our products combine stylish design with exceptional build quality. Each one encased in a unique, compact, hand-finished, alloy chassis. You'd expect award-winning products to have class-leading audio, but the touch and feel of a Cyrus component also whispers quality. The pleasures of possessing a Cyrus system are many to be enjoyed and cherished over a lifetime of ownership.

Our attention to detail extends through to the appointment of the best retailers. We insist that they have expert staff, trained to explain the features and benefits of Cyrus systems in simple terms. We also insist they have good demonstration facilities to ensure that you, the customer, have the opportunity to listen to the many alternatives in the Cyrus range before you buy.

2	pure Cyrus performance
4	exceptional design standards
6	intelligent system building
8	digital disc players
10	amplifiers
12	power amplifiers
14	surround sound – going to the movies
16	the supporting cast
18	Cyruslink
20	living with integrated technology
22	painting with music
24	your route to the ultimate hi-fi
25	upgradeability
26	specifications
30	accessories
31	awards

pure

performance

In the pursuit of excellence Cyrus has made substantial investment to overcome engineering challenges. Every aspect of our development process is focussed on maximising performance. The Cyrus chassis is an example of the lengths to which we go. The whole chassis is die-cast as a single piece from non-magnetic alloy. This provides not only a high quality protective shell for the sensitive internal components, but from an audio perspective has the dual benefits of isolation from interference and low resonance, enabling us to overcome significant barriers to ultimate performance.



Cyrus components contain many advanced features but only the most frequently needed are visible while more detailed options are accessed via a logical menu system, keeping the design simple for day-to-day use. Our AV products are an example of how we have reduced the controls to a minimum yet, if desired, you can adjust the more advanced options through the menu. Alternatively, you can use our automated room-setup feature and let the unit's software assess the listening environment and automatically adjust the settings to the optimum levels.

control

MC-BUS (Master Control) is a feature that allows all the different units in your system to 'talk' to each other. This results in intuitive operation as the system anticipates and thinks for you, automatically setting levels, switching and powering up the right components, dependent on what you select to listen to. Consequently our largest systems are as easy to operate as the smallest. It's not magic, but it is clever.

precision





CYRUS

Each die-cast chassis is injected under enormously high pressure into a mould and once cooled it is shaped and finished by hand before it is passed for painting. This provides an ideal structure for the electronics to perform at their best in an enclosure that sets Cyrus products apart. Each Cyrus component is available in a silver or textured black finish. In a world of mass production, this commitment to aesthetic excellence is rare at any price.

Recently we developed a moulded, non-magnetic base cover that helps our products sound even better. However, for some models we need a screen to protect the sensitive audio signals from interference, so we have applied a silver alloy coating to the base to shield the sensitive electronics.

exceptional design standards





the Cyrus components intelligent system building

The Cyrus range is divided into three groups of components each designed to sound stunning but separated by power, resolution and price.

The Six Series is designed to provide exceptional audio quality, the Eight Series offers outstanding performance while our ultimate X Series components represent our most accomplished engineering to date. The Cyruslink range offers the opportunity to store music on a hard disc drive for instant access anywhere around your home.

The Six Series

Our most affordable components contain many elements of the higher Series models; the Six Series is engineered to provide exceptional audio quality at competitive price points and is the entry to the Cyrus family for many people. Each can be returned to Cyrus for upgrade to Eight Series models, thus providing a long and valuable life for your initial investment.

The Eight Series

Eight Series models provide outstanding performance. Our award winning CD and amp models are high resolution audio components designed with enough power to sound fabulous in more spacious rooms. Taking the performance a stage higher is easy as all the units are upgradeable by using separate power supplies or additional power amps. The Eight Series also includes home theatre components that allow you to enjoy the same performance for films as well as audio.

The X Series

The X Series features our most advanced engineering using the latest ideas and components. Although each of the X Series models is designed to combine into an outstanding integrated system, they can be used successfully to enhance the performance of the Eight Series. Source components, augmented by PSX-Rs, provide incredible resolution from your CDs. Special amplifiers, each capable of delivering immense power, perform with astonishing precision, yet remain able to reveal the intricate tones of the softest voice. The X Series is capable of unearthing the finest detail from your favourite discs, enhancing the sound to a more intense and emotive level.

The supporting cast

In addition to the main products, we make a range of supporting models including power amps, accessories, speaker cables, interconnects and stands, specially developed to get the most from your investment. Our partnering Cyruslink models are designed to allow you to link your system to other rooms around your home. You could for instance store your entire music collection on a central hard disk audio server for immediate access from any room in your home, or simply listen to, and control, your main system from other rooms such as a study or kitchen.

One of the core design principles Cyrus has embraced for the last 20 years is that of upgradeability. Our disc players offer outstanding performance, yet each player's ability can be further enhanced either by adding a PSX-R power supply or a DAC decoder to improve performance. Some players may even be returned to Cyrus for upgrade to a higher specification model.

digital disc players



Cyrus' engineers have been at the forefront of CD design since the technology was invented in 1978. Winning awards around the world for the performance of our players, we pride ourselves on our understanding of this vital element of any system. Despite attempts to launch alternative formats the CD platform is set to remain the dominant audio format for the foreseeable future.



CD 6

The CD 6 sounds exceptional because it is based on the CD 8x. The difference is we have used a simpler power supply and DAC to offer a more competitively priced player in the Cyrus range. The player is highly regarded by customers and the press alike for delivering excellent audio; add the fact that you can return the player to Cyrus where we can upgrade it to full CD 8x specification at a cost only marginally higher than the original difference in retail price, and you can see why the CD 6 is the preferred choice for the system builder on a budget.

CD 8x

The CD 8x is an outstanding CD player on many fronts. The player has an exceptionally open sound allowing an unusually realistic window into the recording. The treble is sweet, open and detailed without ever sounding harsh. Behind the simple layout of the front fascia lies a very sophisticated machine. Twin power supplies and Cyrus' class-leading dual mono digital technology have been miniaturised to fit into the high quality chassis providing you with a simple to use class-leading CD player. PSX-R upgradeable.

DAC X

A two box CD solution is the only route to improve quality beyond the CD8x and to make a high-end statement worthy of the 'X' series. The DAC X becomes this second box and is the ultimate in Digital to Analogue Conversion technology. Our dual mono upgradeable DAC cards, up-sample all six input sources and re-clock the digital signal for processing in Cyrus' latest decoder engine. This means that older or less capable products with stereo digital audio outputs can also be upgraded and improved by connecting through the DAC X.

In addition the DAC X is designed so it can incorporate a very high performance pre-amplifier. You may order the DAC as a multi-input stereo digital decoder as described above, or with an integrated pre-amplifier called DAC XP described later in the pre-amplifier section. However you specify this model, it will boost the performance and extend the life of all components connected through it. PSX-R upgradeable

DVD

Our DVD players are designed using the same exacting principles we apply to all our products to deliver outstanding picture quality. Unusually for DVD players, they also offer high quality audio replay. If your goal is fantastic pictures and excellent sound at the best possible price, look no further.

The Cyrus amplifier range begins with two integrated amplifiers, Cyrus 6vs and Cyrus 8vs. Above them in performance are sophisticated pre-amplifier and separate power amplifier models. Power output is important because the perception of “being there” has a lot to do with the amps’ ability to reproduce the dynamic range of the original performance. The more power available the better the system can recreate the range between the softest and the loudest sounds. In terms of audio performance you can never have enough power, however it’s not about playing loud, it’s the power in reserve that the amp uses for short-term dynamic sounds that successfully recreates the music.



amplifiers



Cyrus 6vs

Our entry level amplifier is called Cyrus 6vs. The inherent quality of the Six Series amp is extremely high because the pre-amplifier design is shared with the more powerful 8vs. An important virtue of Cyrus 6 is its ability to be returned to our factory and upgraded to a Cyrus 8. For the average room the two x 60W provides enough power to fill the room with dynamic music, six inputs plus tape are enough inputs for all but the largest systems.

Cyrus 8vs

The Cyrus 8 is a powerful integrated amp. Its two x 70W output provides enough power to fill even large rooms. The Cyrus 8 benefits from a very carefully designed power supply helping it to be more dynamic yet it is also capable of immense subtlety. There are a variety of upgrade options available including adding a PSX-R power supply that will add resolution and refinement to the reproduction, or adding a partnering power amplifier that will further aid dynamics.

Pre Xvs

The Pre Xvs is designed to partner X Power or Mono X power amps. A separate pre-amplifier offers many performance benefits, one of which is that because the pre-amp has its own power supply it is unaffected by the demands of the power amp. The twin pre-amp output sockets allow easy bi-amping with a second power amplifier. If used together with the optional PSX-R power supply the resolution is simply stunning.

DAC XP

The DAC XP is a pre-amp equipped DAC X decoder with six digital and two analogue inputs. The pre-amplifier is a dual mono fully balanced design intended for the very finest systems. Combining the DAC and pre-amp in a single component removes a considerable amount of circuitry, resulting in a cleaner audio signal. The DAC XP will be a valuable option where the customer is assembling a system that uses several digital sources as they will all be improved by the state-of-the-art DAC section. PSX-R upgradeable.

Power amps are key to the dynamics of any system so Cyrus offers a range of amps letting you select the most appropriate model for the job. Good power amps must possess more than just power; equally important is matching the tonal qualities of the partnering components and the ability to remain subtle enough not to destroy the carefully crafted resolution of the source components. As a general rule adding another amp will improve dynamics while adding a PSX-R will help resolution. One of the benefits of our modular system is that you can easily add another component later on and hear a real improvement.

Mono X

With a dynamic power of over 1,500W and a conservative rating at 150W RMS the Mono X is a very special amp for the finest systems. The Mono X is an extremely dynamic amplifier, capable of producing enormous short-term power to drive even the most demanding of high-end speaker designs. The advanced 'Zero Feedback' circuit design eliminates the need for global negative feedback and exhibits a distortion characteristic that reduces with output power to correspond with the sensitivity of the human ear. A digital control system protects the amplifier from extreme overload and provides intelligent temperature management for the casing.

X Power

This is a new two x 70W design developed to provide a matching power amp for the Pre Xvs and DAC XP. A single X Power with a pre-amp makes an ideal high quality pre/power system. Alternatively two could be used either bi-amped in stereo or used in mono providing 130W each. It will depend on your loudspeakers and personal taste whether you prefer the sound of a pair in stereo or mono configuration, a Cyrus dealer can demonstrate multi-amp options and help you decide. Generally, bi-amping your speakers (a pair in stereo, one for the bass and one for the treble) will make them sound more detailed; however with more demanding speakers the extra power of two amps in mono will sound more dynamic. Try it and see if you prefer the subtlety of two amps in stereo or the dynamic power benefits of two in mono. Whatever you decide, the performance is outstanding and you may even end up planning to use four. You can upgrade the amps performance further with our PSX-R providing even better resolution. Eight boxes may seem a lot but boy does it sound good!

SmartPower Plus

The SmartPower Plus is a powerful and flexible power amp. It is signal sensing and it can also be switched into mono for instant upgrading. Start with one SmartPower Plus operating in stereo, then buy another and have one on each channel operating in mono mode for double the power. Alternatively it can be used in mono or stereo mode as a centre channel amp for an AV system. Based on the circuitry of the Cyrus 8vs, this new two x 60W amp will be an ideal upgrade to bi-amp a Cyrus 8vs system or for more demanding AV systems. When used in mono the SmartPower Plus develops 110W. However you use this flexible amp it can be further upgraded by a PSX-R both in mono and stereo modes.

LinkPower

Based on the SmartPower this high quality and compact amp is ideal for AV systems and multi-room zones. Like the SmartPower Plus, we have included a special signal sensing feature so the amp wakes up when it senses you need it and goes back to sleep if you haven't used it for a while. With no need for a human interface, the LinkPower can be hidden away for those who think that less is more. The two x 50W performance could be the perfect upgrade for a Six Series system or for the centre or rear channels of an AV system.





power amplifiers

Home cinema systems are fabulous fun. The latest films on DVD with digital surround sound, recreate all the excitement of the cinema in the comfort and convenience of your own home.

For Cyrus, the key to realistic home cinema is the subtle audio effects the producer wrapped around the soundtrack. Our goal is to offer surround sound at the same high quality levels as our stereo systems, without unnecessary features.

surround sound





DVD players

Because we understand that it is convenient to have a single player for DVDs and CDs, both our DVD players offer outstanding audio using our acclaimed audio technology. The video sections are tuned to show natural skin tones and fine detail especially in areas of extreme light and dark. Ultimately a dedicated CD 8x will sound better for CDs but it is a very compelling argument to use a single DVD player for both CD and DVD discs.

At Cyrus we're careful to be quality rather than feature led, so while new features are appearing all the time in the AV market, we only incorporate those elements which will enhance your enjoyment of the movie or audio experience.

DVD 6

The DVD 6 is our entry-level DVD player with superb video and audio performance. It is easy to connect to a TV through a SCART lead and includes digital outputs for audio upgrading. The DVD 6 can be factory upgraded to the higher video quality of the DVD 8.

DVD 8

The DVD 8 includes more sophisticated audio and video circuitry with component output to TVs able to take advantage of this superior connection system. The DVD 8 benefits from the option of adding a PSX-R that will improve both the sound and picture quality.

AV 8 – the surround sound decoder

At the centre of all AV systems is a surround sound processor that should be capable of wrapping holographic audio information around the audience.

Often AV pre-amps are bristling with knobs and switches but Cyrus prefers a very simple control panel with just the most useful options visible. The more advanced control settings are accessible by navigating the menu on the LCD display.

In addition to three analogue and six digital inputs, an upgrade is available that adds an additional input designed for connecting a high performance CD player directly to the power amps via the volume control. This option expands the AV 8 into a truly audiophile system pre-amp.

The AV 8 is able to analyse the room environment and automatically set up the channel levels and time delay settings. You sit back and enjoy the performance.

the supporting cast



Phono X

Many of us own record collections that have given us many hours of enjoyment over the years and continue to be an important part of our music collection. The Phono X was designed for those of us who would love to raise the quality of our turntable's reproduction with a modern high performance phono stage. To ensure the Phono X gets the most from audiophile turntable systems we provide dual inputs, the first ensures correct loading for MC cartridges and the second is setup for MM cartridges. The Phono X is PSX-R upgradeable for stunning performance from all good record players.

FM X

Radio can be the most thrilling source of entertainment and offers tremendous value. The Cyrus FM X is an FM tuner able to provide performance indistinguishable from CDs. This top quality tuner only needs a good aerial to provide you with a rich source of ever-changing programme material. The tuner's abilities can be further enhanced by adding the optional PSX-R power supply. This expands the sound stage and sharpens the acoustic picture.



PSX-R

The PSX-R is a high performance power supply; it sits between the mains coming into your home and the Cyrus component. Acting like a huge reservoir, it feeds smoothed power to the sensitive Cyrus circuitry allowing subtle details to be heard through enhanced resolution.

The PSX-R is an upgrade option that most customers add retrospectively, however the acoustic benefit is clear and many eventually buy one for each component. Your dealer will be happy to demonstrate how this valuable accessory improves performance.







Would you like to have use of your main system investment from other rooms in your home? We have two ways for you to achieve this using Cyruslink products.

The first option is to use one of our hard disc audio servers called Linkservers (a modern jukebox). We make two models, one called Solo with a single output, and Quattro that offers multi-room possibility through its four outputs.

Linkserver Solo

This is a CD player with a hard disc drive. You insert a disc into the CD drawer, press record and the Linkserver quickly rips the disc to the hard drive. Because we use special software that copies your disc as a bit-perfect copy on to the hard drive, the CD's original high performance is preserved to be replayed instantly whenever you want it. You can choose from a variety of hard disc size options and even upgrade later.

Having built a library of your favourite CDs on the Solo's hard drive you have instant access to your music library. You can set the player to play any track, or group of tracks, or particular artists randomly.

Linkservers all include a Cyrus engineered DAC so audio performance is assured.

Linkserver Quattro

Quattro has all the features of Solo with four zones of independently controllable output for more sophisticated multi-room installations.

LinkPort

The Linkserver has a compact partner component called a LinkPort. The LinkPort is a complete radio receiver that can access your music library and play back in another part of your home. Up to eight LinkPorts can play simultaneously and independently at one time.

MR 4 – distributed audio

The second option is to use a new component we are planning to launch in the autumn of 2005. It allows the distribution and control of your main system source components to zones (or rooms) around your home. MR 4 will be easy to install and at the same time an extremely high performance distribution network. You will be able to use this with or without a Linkserver.

living with integrated technology

Take a tour of our virtual house and see how the Cyruslink system could fit into your home.

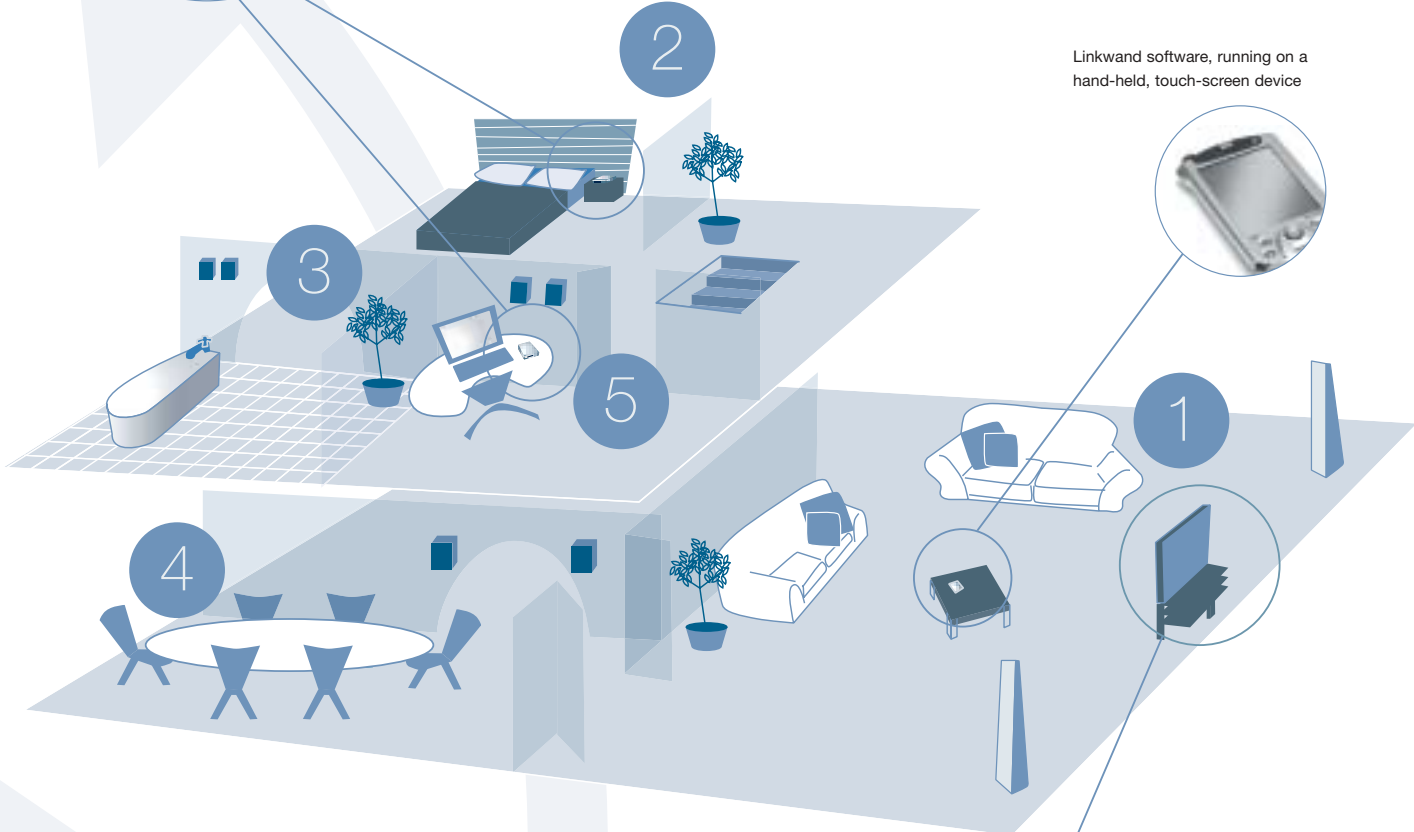
- 1 The main system, in the lounge includes a Linkserver connected to a Cyrus AV system. It contains all the family's music for listening locally, or sharing around the house.
- 2 In the bedroom we have installed a Cyrus LinkPort connected to the home's central Linkserver media library.
- 3 The bathroom has a set of concealed loudspeakers and a hidden Cyrus LinkPower amplifier. It is controlled from the Linkserver, or via a PDA running Linkwand software.
- 4 In the dining room, we have installed a set of loudspeakers powered by a concealed Cyrus LinkPower amplifier and controlled in the same way as the bathroom, or using Linkwand.

Note: The Linkserver could also be hidden, along with the audio system components, in a loft or service room and controlled wirelessly via Linkwand. The Linkserver is connected to the TV to allow easy viewing of the server's media contents.

- 5 In our study area, is a pair of compact CLS 50 loudspeakers and a SmartPower Plus amplifier connected to the Linkserver.



LinkPort



Linkwand software, running on a hand-held, touch-screen device



Linkserver integrated with a Cyrus audio system and operating with a plasma TV screen

Developing components at this high level of performance requires large investments in engineering, licensing and experience. Once our engineers complete a technically precise design we begin the long process that subjects all new models to exacting acoustic tuning. The listening panel then goes to work, sometimes for months, tuning each new Cyrus model until we consider it complete. Our listening panel has wide audio experience and is able to tune and shape each aspect of the sonic picture until satisfied they have maximised the performance available from the design. We often use descriptions from the world of painting and photography, such as light and dark, colour, space and perspective, to describe our work because that's what we do — we paint pictures with music.

painting with music

integrated



CD 6



FM X



Cyrus 6vs

upgrade



CD 8X



FM X



Cyrus 8vs

upgrade



CD 8X



FM X



Cyrus 8vs



X Power



PSX-R

upgrade



CD 8X



FM X



DAC X



Cyrus 8vs



X Power



X Power



PSX-R

pre-power



CD 6



FM X



Pre Xvs



X Power

Stereo

upgrade



CD 8X



FM X



Pre Xvs



X Power



X Power

Stereo bi-amplified

high-end



CD 8X



FM X



DAC X



Pre vs



X Power



X Power



PSX-R

stunning



CD 8X



FM X



DAC XP



Mono X



Mono X



PSX-R

av

av 1



DVD 6



AV 8



SmartPower Plus



SmartPower Plus



LinkPower

av 2



DVD 8



AV 8



Mono X



Mono X



X Power



LinkPower



PSX-R

L/R
front

C
mono or
stereo

L/R
rear

R
front

L
front

C
mono or
stereo

L/R
rear

ultimate hi-fi



CD 8X



PSX-R



FM X



PSX-R



DAC XP



PSX-R



Mono X

R
bass



Mono X

R
treble



Mono X

L
bass



Mono X

L
treble

upgradeability

The Cyrus family of components follows a logical and cost effective upgrade path whereby even a small system may be integrated with our AV and multi-room options. Cyrus systems can also be linked to our hard disc media servers called Linkservers providing many multi-room options.

The wide number of options available allows you to select components that match your lifestyle. If your needs change or you want to improve you system there's always an upgrade path so your original investment remains valuable for many years to come. Your Cyrus system has the ability to grow with you – products with true life time value.

factory upgrades



SmartPower Plus



X Power



DAC X



DAC XP



Cyrus 6vs



Cyrus 8vs



CD 6



CD 8X



DVD 6



DVD 8



AV 8



AV 8 + stereo/multi-channel input upgrade

your route to the ultimate hi-fi

specifications

CD 6 CD, CD-R compatible, glass monolithic laser optics, twin analogue audio outputs, optical digital output, audiophile grade components, 24-bit DAC, remote control, phase invert. Factory upgradeable to full CD 8x specification. Silver alloy coated base.



CD 8x CD, CD-R compatible, dual transformer multi regulated power supply, glass monolithic laser optics, twin analogue audio outputs, co-axial and optical digital outputs, auto-detecting PSX-R upgradeable for additional resolution, audiophile grade components, phase invert, remote control, dual differential 24-bit DAC. Silver alloy coated base. PSX-R upgradeable.



DVD 6 Audiophile DVD video player with isolated CD, CD-R and CD-RW compatible hi-fi quality drive. Dual lens laser pickup for optimal CD playback. Gold plated stereo analogue outputs, also provide two-channel Dolby Digital downmix. Optical (TOSLINK) and electrical digital outputs provide DTS and Dolby Digital. Video outputs include Composite, S-Video, and RGB via SCART. Twelve separately regulated power supplies plus upgradeability via plug-in audio 24-bit DAC module. Factory upgradeable to DVD 8 specification. Phantom surround feature from two-channel output.



DVD 8 Audiophile DVD video player with isolated CD, CD-R and CD-RW compatible hi-fi quality drive. Dual lens laser pickup for optimal CD playback. Gold plated stereo analogue outputs, also provides two-channel Dolby Digital downmix. Optical (TOSLINK) and electrical digital outputs provide DTS and Dolby Digital. Video outputs include Component, S-Video, Composite, RGB and SCART. Twelve separately regulated power supplies plus upgradeability via PSX-R. High performance tuned-colour component output. Virtual surround feature from two-channel output. PSX-R upgradeable.



DAC X DAC decoder with dual mono 24-bit resolution with 192k up-sampling, four co-axial and two optical digital inputs, ultra-low jitter, reference clock, wide mode response for non Group 1 sources, programmable input naming library, digital out, line out RCA, custom toroidal power transformer feeding multiple regulated star earthed power supplies. PSX-R upgradeable.



DAC XP Single Cyrus chassis with twin mono fully balanced stereo pre-amplifier and twin mono DAC. Pre-amplifier has, in addition to DAC inputs, two x RCA input. Bi-amp, two x RCA output, two x XLR output. DAC is dual mono 24-bit resolution with 192k up-sampling DAC decoder, four x co-axial and two x optical digital inputs, ultra-low jitter, reference clock, wide mode response for non Group 1 sources, programmable input naming library, digital out, line out RCA, twin custom toroidal power transformers feeding multiple regulated power supplies and star earth topology. PSX-R upgradeable.



AV 8 Digital 5.1 channel pre-amplifier, decodes Dolby Digital, DTS and Pro Logic II with automatic digital format detection. Onboard computer analyses room and sets speaker level and time delay via supplied microphone. Manual set-up via remote control. nine inputs include four digital co-axial, two optical (TOSLINK), three stereo analogue. Outputs include front left/right, rear left/right, twin centre outputs for quality bi-amping of centre speaker. Twin sub output. MC-BUS master component. Tape output plus digital co-axial. Analogue input sensitivity 2V. Output voltage 3.9V max all channels. Custom library of input option names allowing source-naming option on large display. Upgrade option to add 5.1 channel discrete audio input.



Cyrus chassis is 73 x 215 x 360 mm, non-magnetic throughout, magnesium pressure die-cast alloy. Available in silver or textured black.

FM X FM radio tuner featuring 29 preset memory locations. MC-BUS compatible for uniquely accurate tuning calibration. Tuner display shows frequency to two decimal places, (10kHz steps). 76db S/Noise ratio stereo. >50db channel separation. Magic eye tuning indicator for accurate manual tuning. Cyrus designed RF stage delivers excellent THD of 0.07%. Upgradeable with PSX-R power supply.



Cyrus 6vs Integrated amplifier rated at two x 40W/8ohm. Individually programmable input sensitivity. Twin speaker outputs for bi-wiring. Pre-amp out for bi-amping. Six line inputs plus tape monitor. Digital, speed sensitive volume control specified with 0.1db channel balance. Intelligent headphone facility. Computer controlled digital protection system. MC-BUS master component. Factory upgradeable to full Cyrus 8vs specification.



Cyrus 8vs Integrated amplifier rated at two x 70W/8ohm, with high current drive capability of 30A pk. Individually programmable input sensitivity. Speaker outputs for bi-wiring. Twin Pre-amp out for bi-amping. Six line inputs plus tape monitor. Digital, speed sensitive volume control specified with 0.1db channel balance. Intelligent headphone facility. Computer controlled digital protection system. MC-BUS master component. PSX-R upgradeable.



Pre Xvs High performance audio pre-amplifier, six line inputs plus tape. PSX-R upgrade recommended for improved resolution. Individually programmable input sensitivity. Dual pre-amp output for bi-amping. Digital, speed sensitive volume control specified with 0.1db channel balance. Intelligent headphone facility. MC-BUS master component. Integrates with AV 8 to provide a two and 5.1 channel system. PSX-R upgradeable.



Mono X High performance state-of-the-art zero-feedback mono power amplifier providing 1,500W burst power (150W/8ohm continuous, 40A pk). Cyrus designed X power supply based around massive 330VA power transformer provides fabulous dynamics for high performance. XLR input. MC-BUS compatibility for AV and multi-room remote use. Digital protection system. Chain output facility allows bi/tri-amping and for large multi-amp zones.



LinkPower Stereo power amplifier rated at 50W/8ohm, 15A pk. Amplifier features signal-sensing auto-start for AV and multi-room remote use. Chain output facility allows bi/tri-amping and for large multi-amp zones. High-speed overload and thermal protection circuits for confidence in all installations.



SmartPower Plus Stereo/mono power amplifier rated at 60W/8ohm, 30A pk (stereo), 110W/8ohm (mono). Auto-detecting PSX-R upgradeable boosting system resolution and power to 125W mono. Amplifier features signal-sensing auto-start and MC-BUS compatibility for AV and multi-room remote use. Digital protection system. Chain output facility allows bi/tri-amping and for large multi-amp zones. PSX-R upgradeable.



X Power Stereo/mono power amplifier rated at 70W/8ohm, 35A pk (stereo), 120W/8ohm (mono). Auto-detecting PSX-R upgradeable boosting system resolution and power to 130W mono. Amplifier features signal-sensing auto-start and MC-BUS compatibility for AV and multi-room remote use. Digital protection system. Chain output facility allows bi/tri-amping and for large multi-amp zones.



Phono X Audiophile phono stage with twin head amps for MM and MC. MC loading selector. EQ response selection RIAA and IEC. Custom low leakage power transformer. Optically isolated micro link. Phono Input Sensitivity MM 5mV, MC 390µV. Phono input impedance MM 47kohm, MC 1K, 100 and 10ohms with optional 1nF. Output voltage 370mV (RCA). Pre-amp output impedance 47ohm (RCA). RIAA tolerance 0.1db. THD+N MC 0.05%, MM 0.01% (20Hz-20kHz). S/N ratio MM 92dBA, MC 84dBA.



PSX-R Highly regulated intelligent cascade power supply. 300VA power transformer. The PSX-R allows full potential of partnering Cyrus components by providing extremely smooth and stable DC feed free from mains induced spuriae. Links to main system component via umbilical lead.



CLS 50 Compact two-way reflex speaker system designed to fit into bookshelves or be stand mounted. Recommended for amplifiers rated between 40 – 100W. The speaker is designed for small to medium size rooms. The highly tuned five inch woofer features a vented magnet and a specially shaped cone termination for lower cone resonance. The wide dispersion 3/4 inch tweeter is ferrofluid filled for improved high power performance.



Linkserver Solo CD transport, twin upgradeable hard disc storage options, Ethernet network ready, single zone analogue output, Cyrus tuned DAC, co-axial/TOSLINK digital out providing DAC X upgrade, Cyrus Linkwand remote software compatible in the main zone, RS 232 open architecture compatibility, IR remote control, Xiva producer software for digital library management, video out for navigation. Analogue recording enabled. Available in silver only.



Linkserver Quattro CD transport, twin upgradeable hard disc storage, Ethernet network ready, four zone analogue output for multi-room operation, Cyrus tuned DAC, co-axial/TOSLINK zone 1 digital out providing DAC X upgrade, Cyrus Linkwand remote software compatible, RS 232 open architecture compatibility, IR remote control, Xiva producer software for digital library management, video out for navigation. Analogue recording enabled. Available in silver only.



LinkPort Compact music system with Linkserver library playback and navigation, two x 30W stereo amp, Internet radio (through broadband), FM radio, timer facility, pre-amp out for LinkPower upgrade, aux input, IR remote control. Available in silver only.



COPYRIGHT ADVICE:

The copying of material protected by copyright law may require the permission of the copyright holders. It is the user's responsibility to ensure that copyright law is complied with.

NOTES:

Some models may not be available in every market. Product designs & specifications subject to change without notice E&OE.

Cabled or wireless 'Ethernet' installations will require additional networking components.

Cyruslink™ is designed to be compatible with "Universal" programmable remotes, such as Philips Pronto and a wide range of industry-standard multi-room control systems, including AMX, Crestron, Russound and Xantech.

AVRS 7 remote control

Full system remote control featuring selectable DVD, AV and audio functions. Reduced button count allows main function of all components with simplified colour coded buttons.



Cyrus Interconnect

Special audiophile grade Solid Core interconnect cable featuring non-magnetic "Bullet" plug connectors. Tuned to match the Cyrus sonic signature. Cable is enclosed in black woven fabric to help invisibility once installed. Recommended for use throughout all Cyrus systems. Available in 0.2 metre, 0.5 metre and 1.0 metre lengths. Custom ordering service.



Cyrus Speaker Cable

Solid core flat profile speaker cable featuring four conductors allowing bi-wire and bi-amp installations and upgrades. Tuned to complement the Cyrus sonic signature. Matches Cyrus interconnects design philosophy for absolute system symmetry. Colour-coded PTFE conductor screens housed within semi-transparent flexible outer LDPE/PTFE derivative to minimise installed visibility. Fitted with high performance gold plated connectors. Available in both two x three and two x five metre or custom ordered lengths to match any room.



HARK

Modern Cyrus equipment support constructed from extruded non-magnetic alloy and die-cast sections. Standard kit includes five shelves. Can hold up to eight components. Internal cable management. Wall mounted option for total cable invisibility. Optional die-cast stand for free standing option.



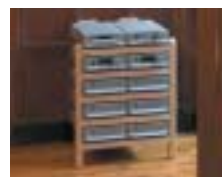
Tri-Arbour

Hand made Cyrus equipment frame made from (low resonance) solid wood. Each component is vibration proofed by three neoprene isolators. Strong base spikes protect carpets from flattening and improve sonic performance. Accepts five components. Only 24 inches high. Integrated cable management. Upgradeable with matching two unit extension frames.



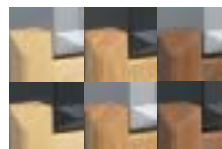
X-Arbour

As Tri-Arbour but allows up to ten Cyrus components. Cable management included. Complete with ten sets of neoprene isolators. Lower shelves will accept standard size video recorders etc. Optional isolated turntable plinth. Optional Plasma TV platform.



Arbour system support colour options

Because each of the Arbours is handmade by a craftsman in the UK, each version can be made in almost any wood albeit at additional cost. Standard finishes include Hard Rock Maple, American Light Oak, Black Walnut. Contrast Black Walnut with silver components or try American Light Oak with textured black. See the option chart on our website.



For detailed specifications visit our website at www.cyrusaudio.com

The Cyrus logo, Cyruslink™, "MC-BUS" and 'Q' logo are trademarks of Cyrus Audio Limited.

"Dolby", "AC-3", "Pro Logic" and the double-D symbol are trademarks of Dolby Laboratories. DTS is a registered trademark of Digital Theater Systems Inc. All rights reserved.

accessories



When we tune each component to extract the most thrilling performance possible, we carefully select interconnecting cables that compliment the Cyrus sound. We receive many requests for advice regarding cables and have now launched a Cyrus Interconnect and matching speaker cable so you can hear exactly what we intended you to hear when we perfected the tuning of our components in the Cyrus listening room. Our Interconnect cables form part of the tuned circuit and so contribute to the balanced sound.

Crafted from the best non-magnetic materials our specially tuned cables are the perfect choice for a Cyrus system.

“The way our CD Player Product of the Year brings music to life is worryingly addictive – you can’t wait to swap from one favourite track to the next. Bass is taught, well-defined and musical, while treble is smoother and incredibly refined, and vocals and instruments ooze emotion and life. The CD player is a dream come true”



Cyrus CD 8X Product of the year CD player 2004

awards



“Here’s a machine that advances the ability of its excellent predecessor by an almost absurd degree. The Cyrus 8vs is an absolute superstar”



Cyrus 8vs Supertest Winner (Oct 04)



In recent years, Cyrus products have won the following industry accolades: –

WHFS&V ★★★★★

- Cyrus CD 8x **Product of the year** (Oct 04)
- Cyrus 8vs **Supertest Winner** (Oct 04)
- Pre X & Mono X (Aug 03)
- CD 8 (Sep 03 & Mar 04)
- Speaker Cable (Mar 04)
- Quattro FM & Smart (Mar 04)
- Group Test Winner ★★★★★**
- CD 6 (Sep 03 & Dec 03)

- Cyrus 8 & CD 8 (Jan 04)
- Cyrus 8 (Apr 04)
- CD 8 & PSX-R (May 04)
- CD 6 **Supertest Winner** (Sep 03)
- CD 6; CD 8 **WHFS&V Best Buy** (Oct 03)
- Cyrus 8 **WHFS&V Product of the Year** (Oct 03)
- CD 8 **Hi-Fi World 4** (Aug 03)
- DVD 8 & PSX-R **DVD Buyer** (Nov 03)
- DVD 8 **DVD Buyer, Best Buy** (Awards 03)

- Cyrus 8 & PSX-R **Hi-Fi+ Product of the Year** (Jan 04)
- Cyrus 6 **Classic FM** (Mar 04)
- Linkserver & LinkPort **Digital Home Group Test Winner** (Jun 04)
- Cyrus 6 **Le Monde de la Musique Choc Award** (2003)
- FM X **Diapason d'Or** (2003)
- DVD 8 **Future Home** (May/Jun 03)
- Cyrus 8 **Hi-Fi News Editor's Choice Awards** (2003)







Cyrus Audio Ltd
Ermine Business Park Huntingdon Cambridgeshire PE29 6XY UK

Tel: +44 (0)1480 435577 | Fax: +44 (0)1480 437715 | email: info@cyrusaudio.com
www.cyrusaudio.com | www.cyruslink.com